

Détermination des  
**Z**ones d'**A**ccélération de la production  
des **E**nergies **R**enouvelables

sur la Commune d'Avion

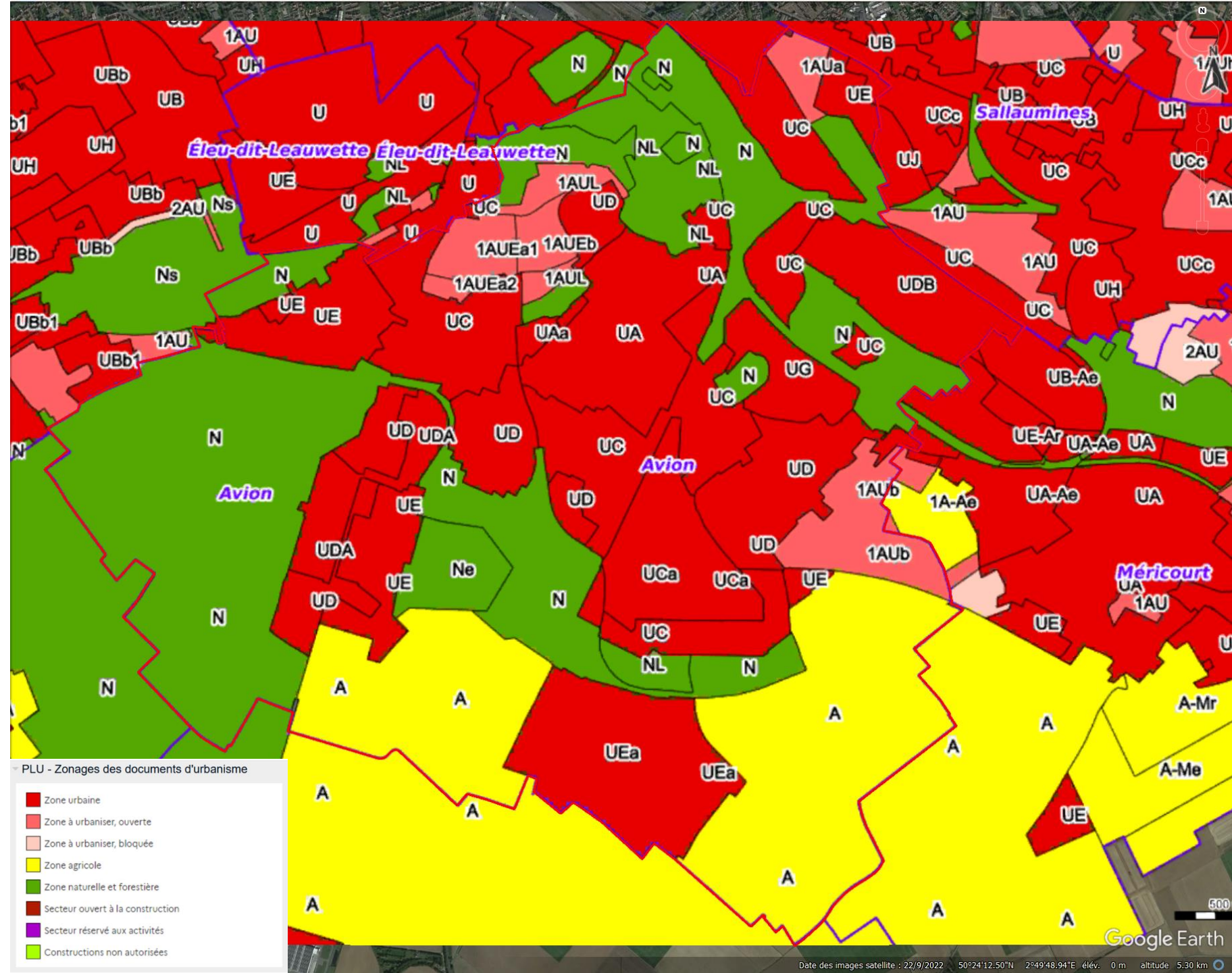


# Photo aérienne AVION



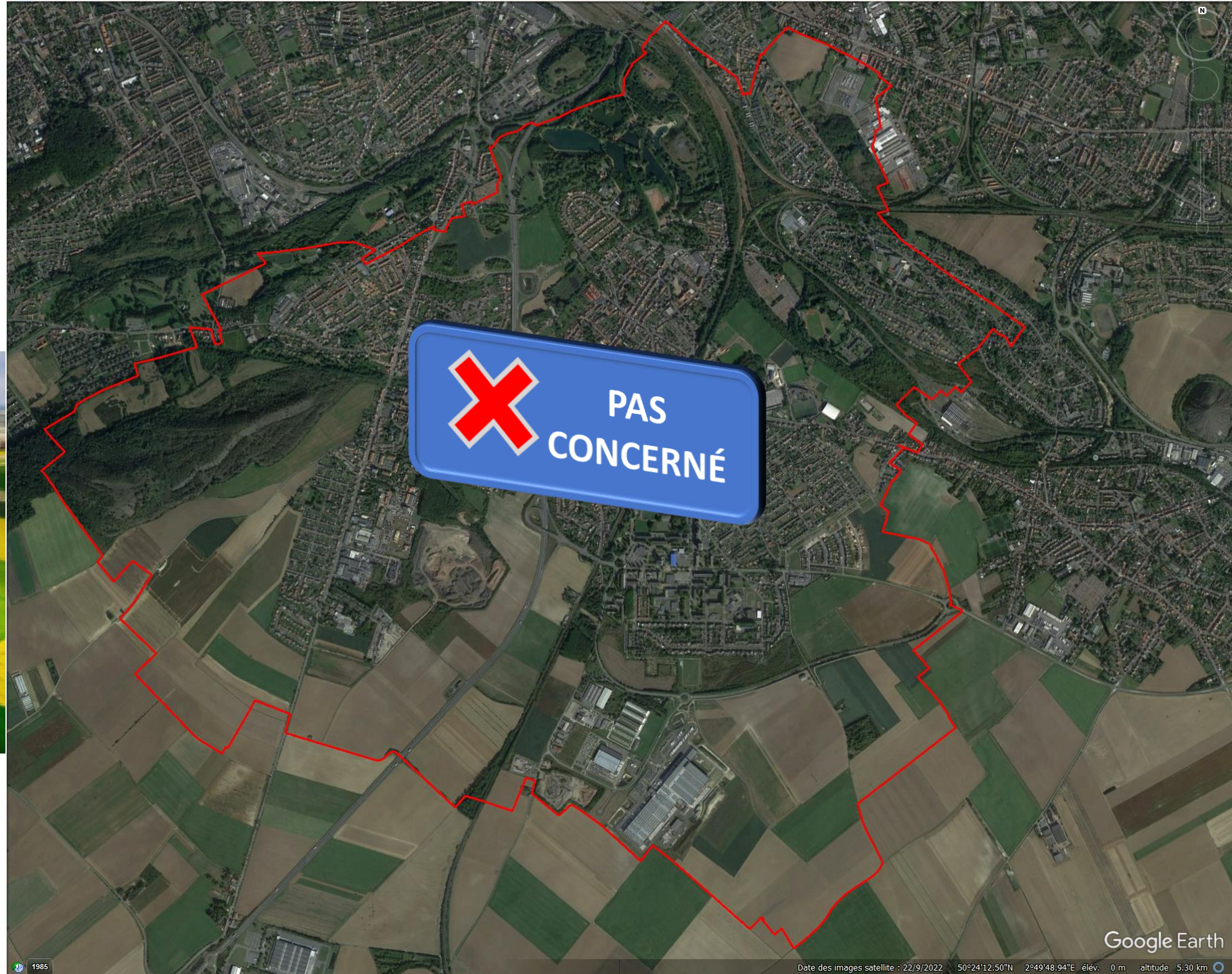


# Plan Local d'Urbanisme





# Éolien

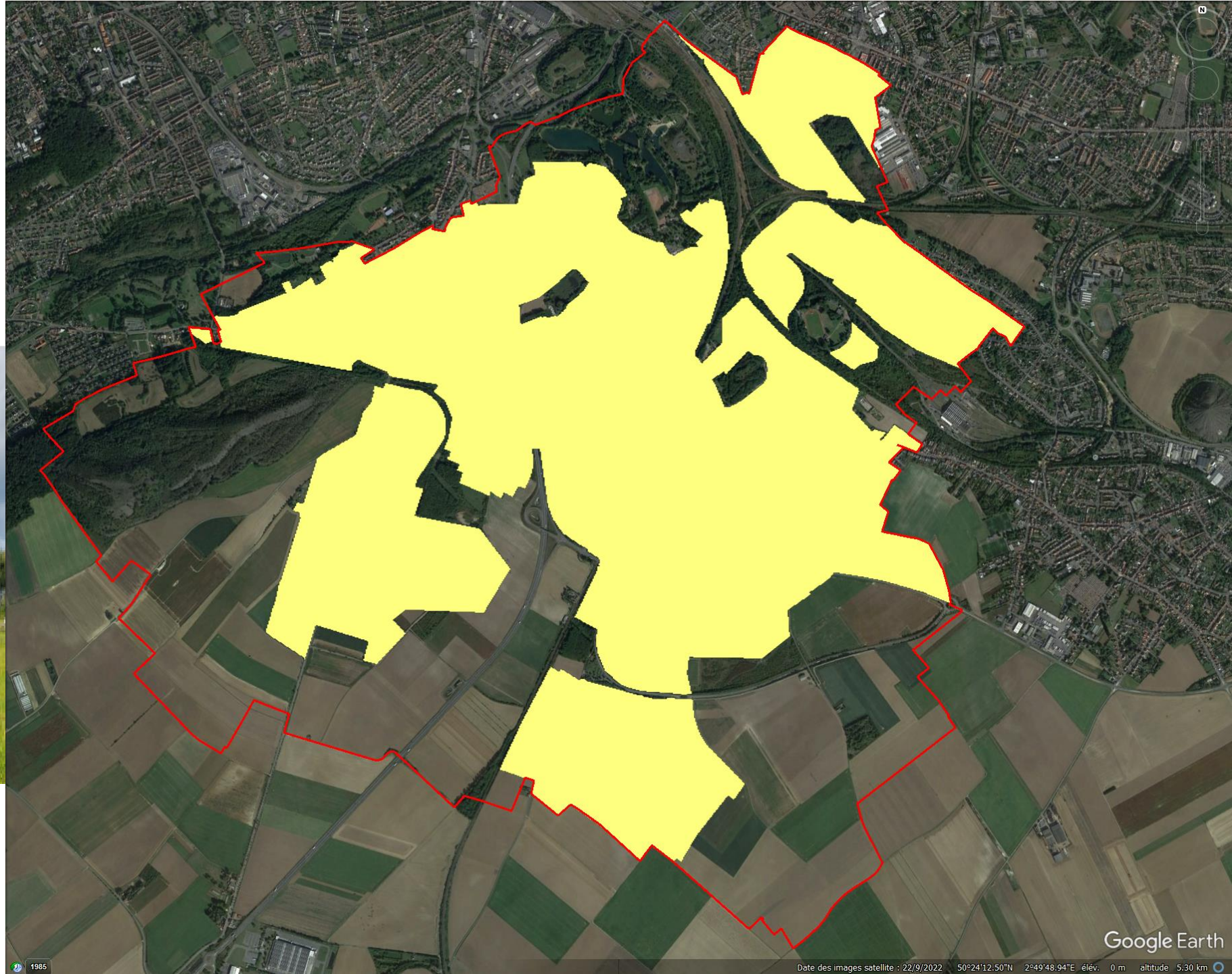


**X** PAS  
CONCERNÉ



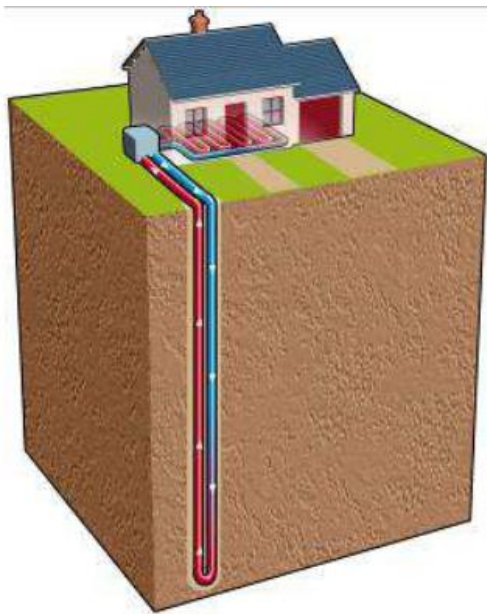
# Solaire

thermique et  
photovoltaïque





# Géothermie

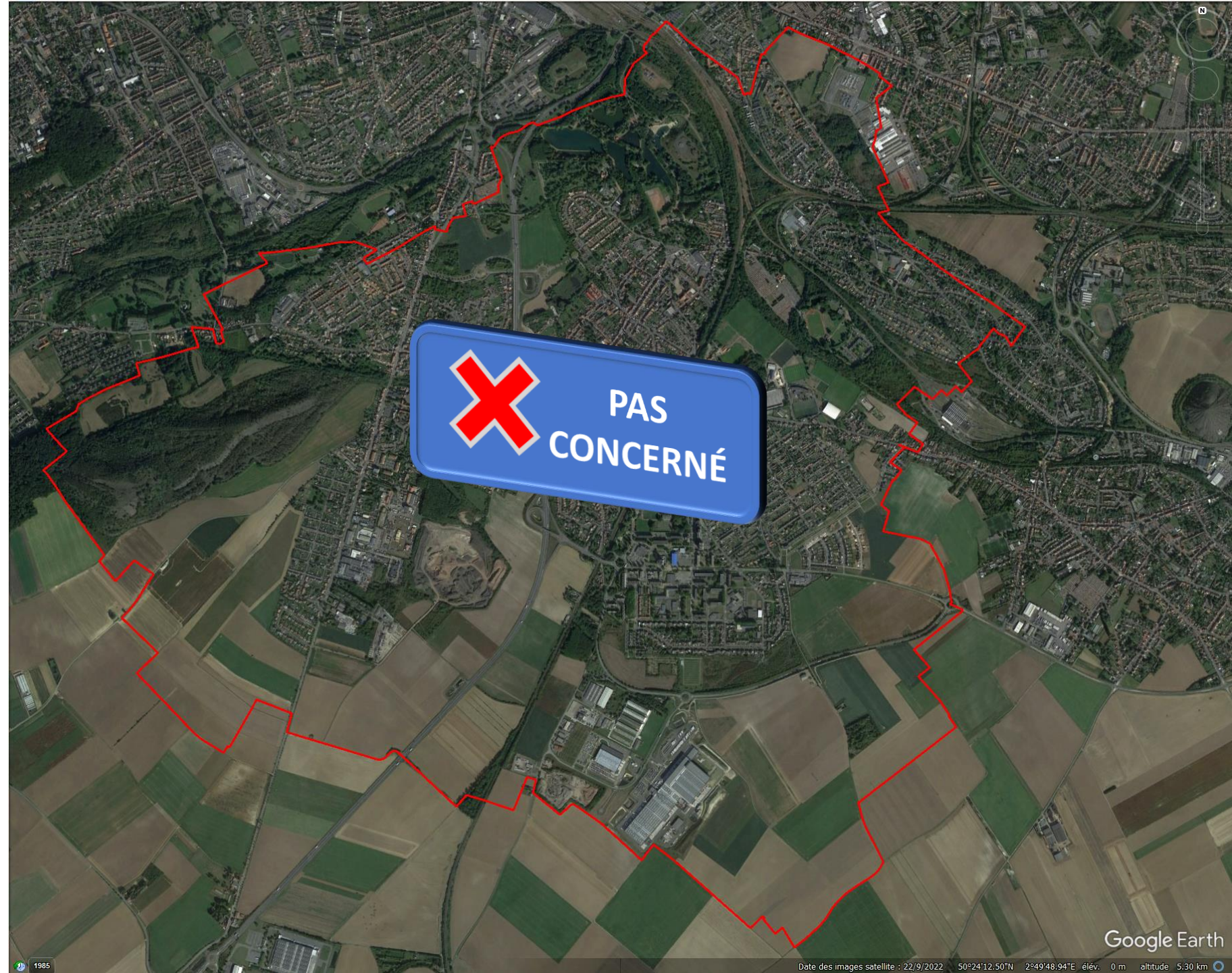


Source: <https://www.cerema.fr/fr/actualites/cerema-contribue-cartographie-aleas-geothermie-minime>





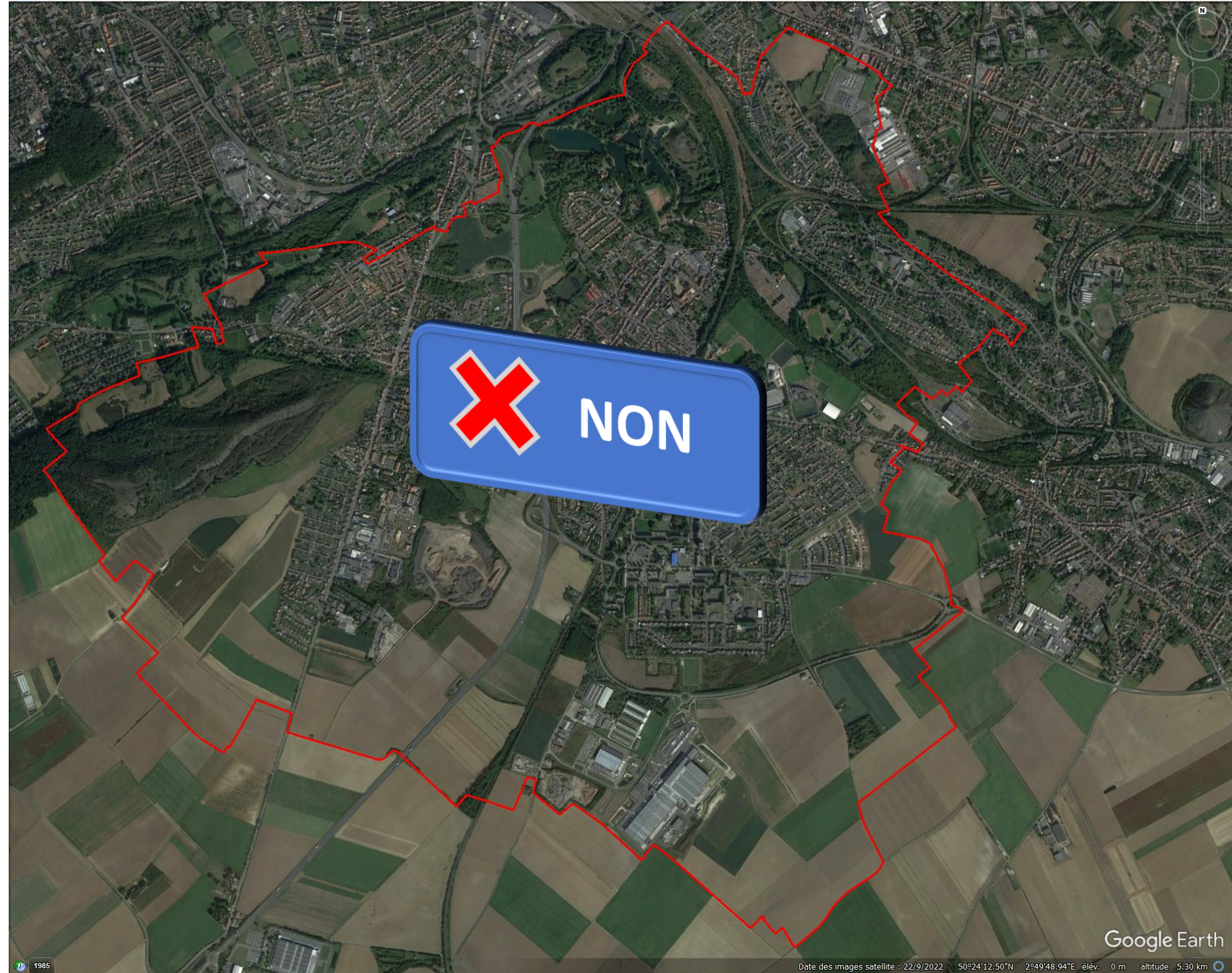
# Hydroélectricité



**X** PAS  
CONCERNÉ

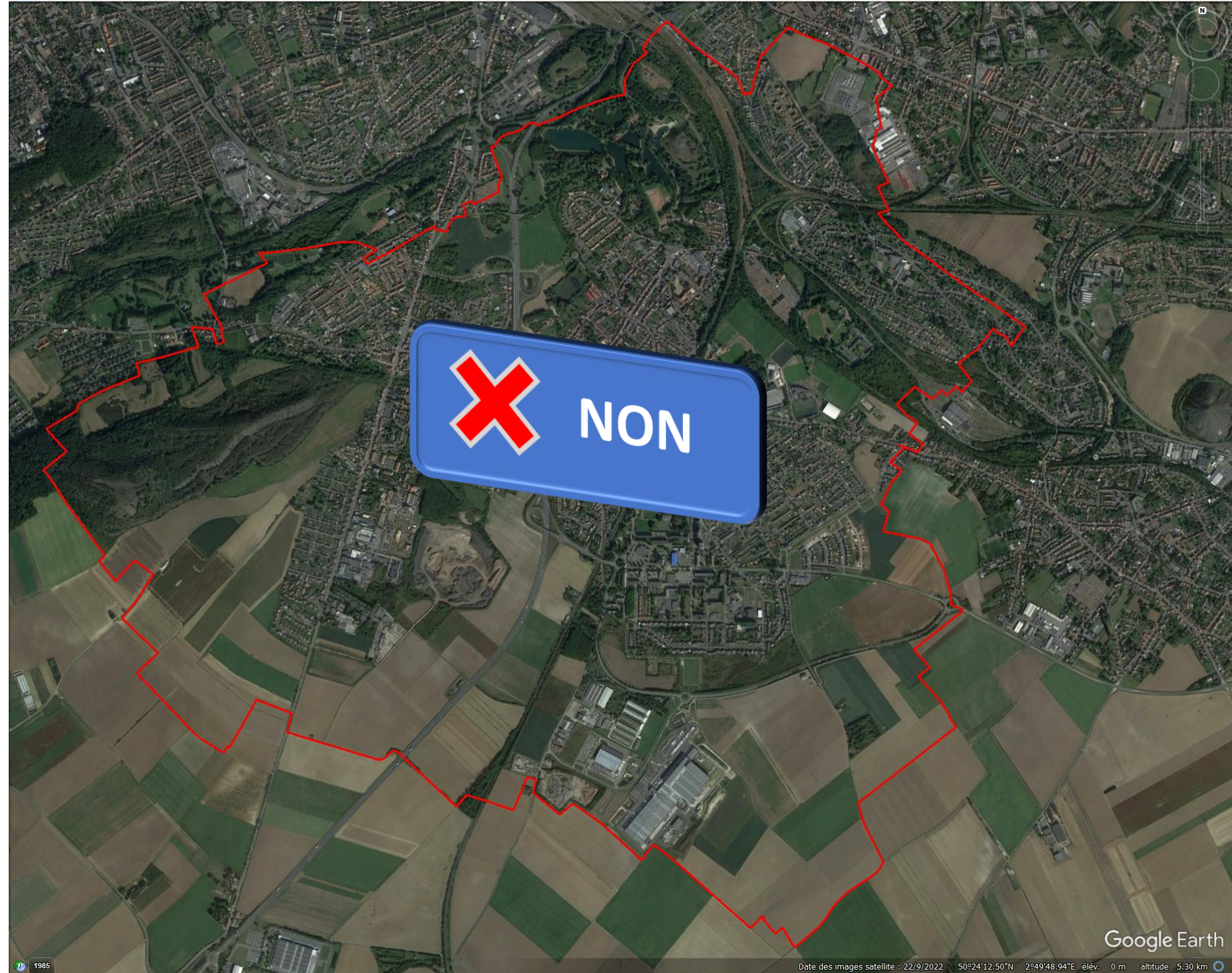


# Biomasse



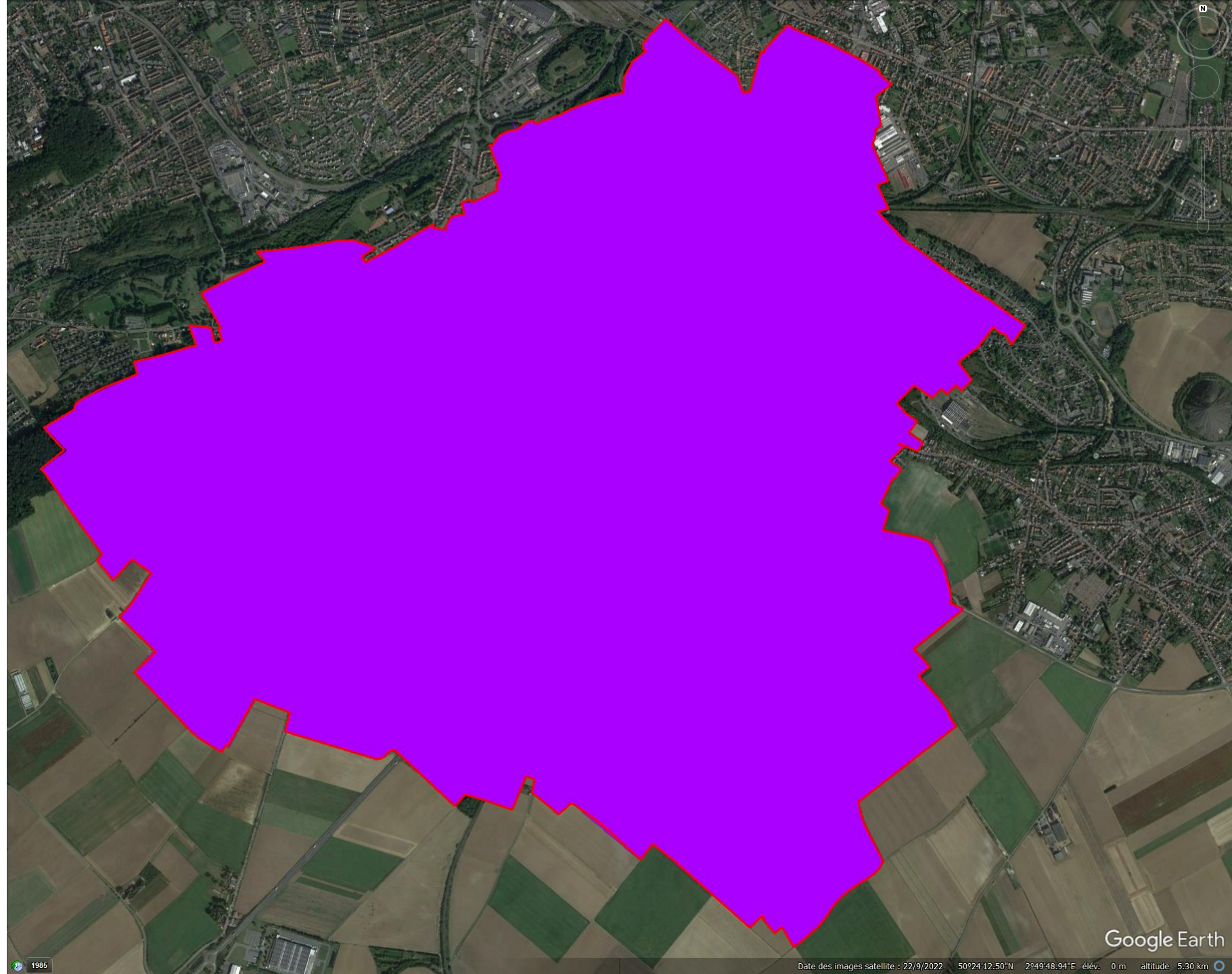


# Biogaz





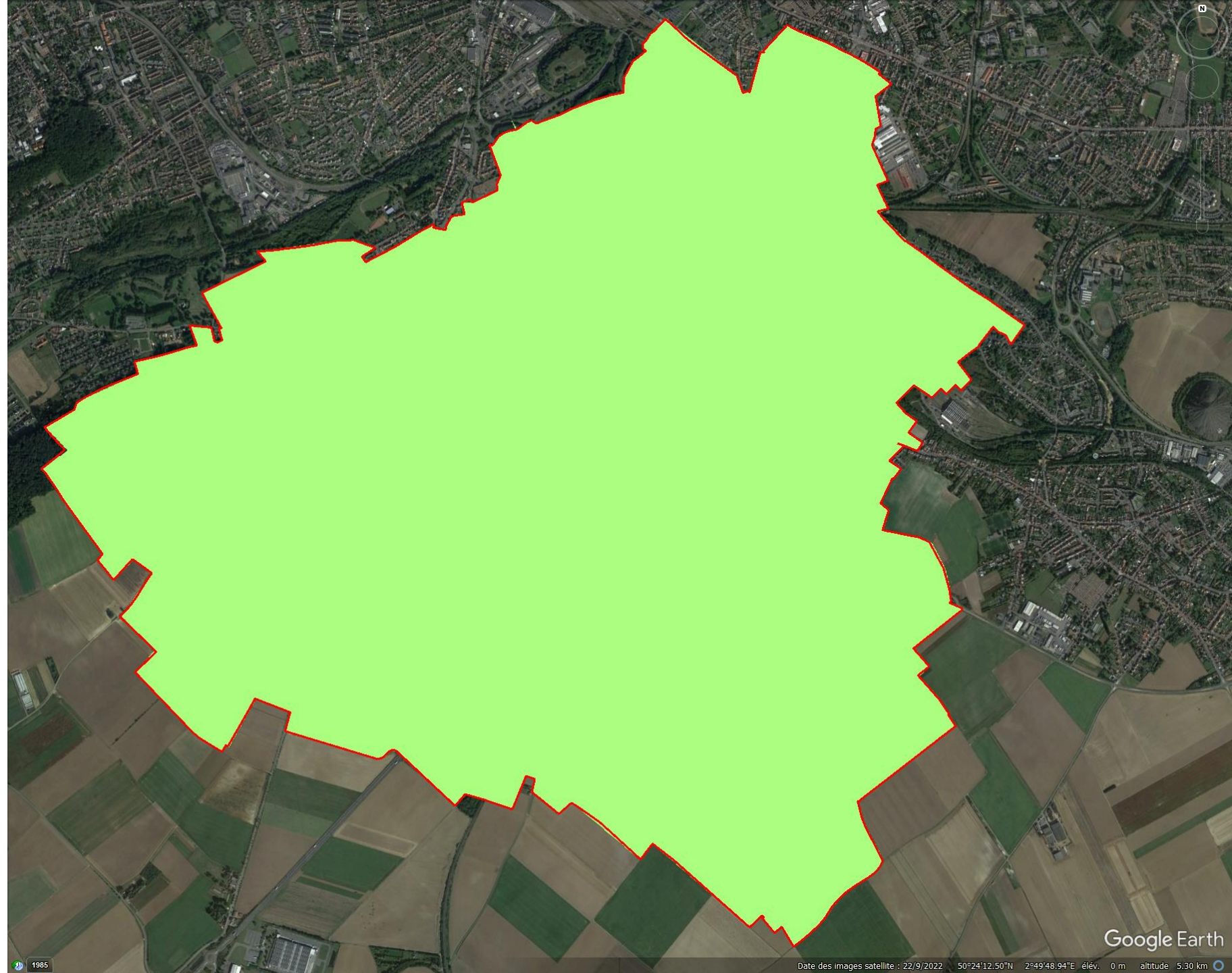
# Réseau chaleur GAZONORD





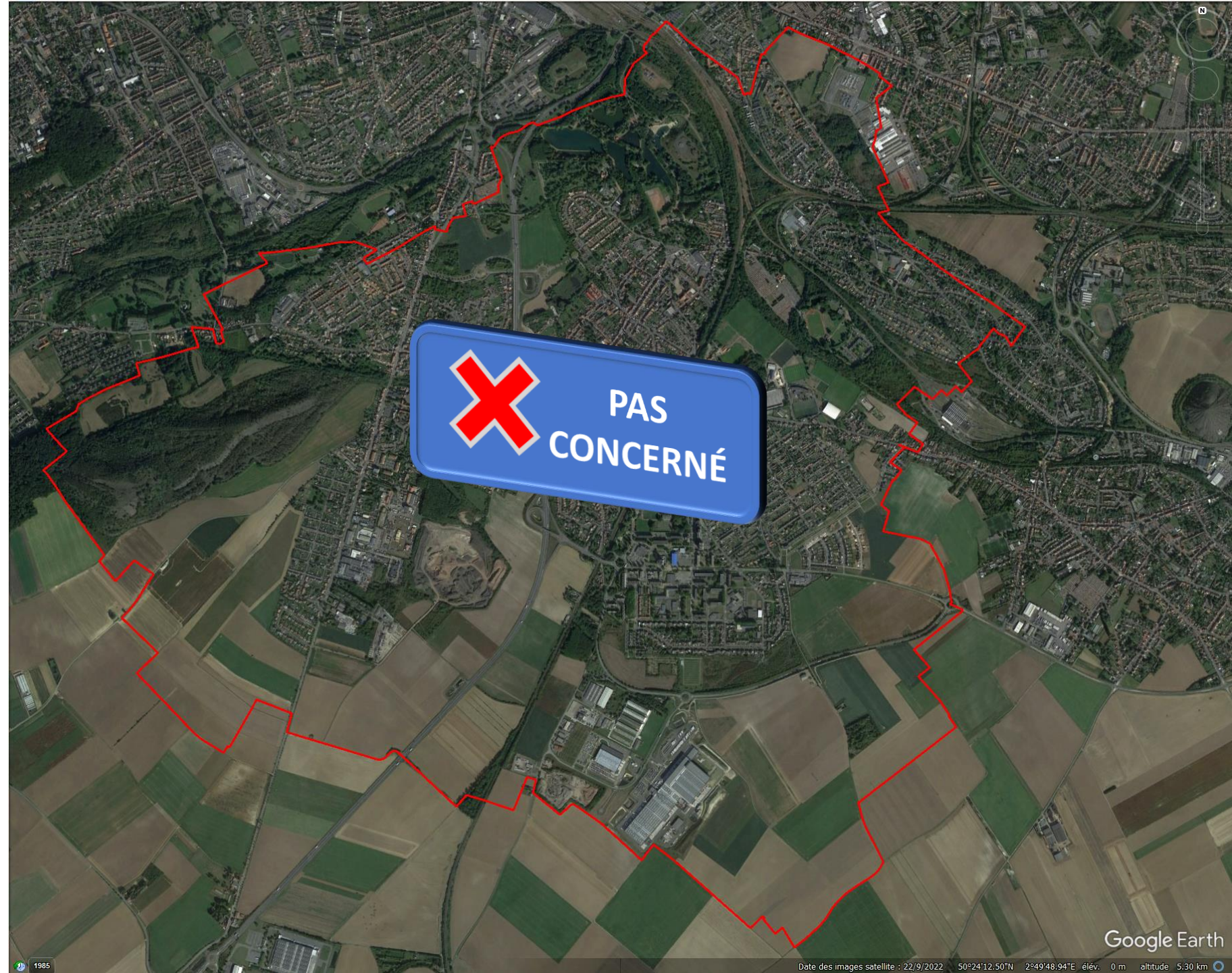
# Énergie ambiante

( énergie naturelle ou accumulée dans  
l'air, eaux de surface ou eaux usées)





# Marémotrice, houlomotrice et autre énergie marines



**X** PAS  
CONCERNÉ